

Line-16 Symmetry

* Pre Activity Let's begin in

* T.B. pg no-191

Q4. Points to remember

1. All regular shapes have line of symmetry.

2. When an object can be divided into two or more identical parts is called symmetry.

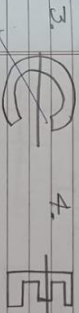
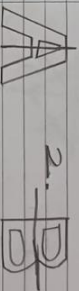
3. The line along which we fold the shape is called the line of symmetry.

4. The location of position of an object on the map is called as coordinates.

5. We can use these co-ordinates

along with compass to identify the path leading to different places.

Q2. Write any four English alphabet letters and draw line of symmetry on them.



Blowing Q

Q1. List 5 English alphabet letters that are symmetrical.

Ans. Letters that are symmetrical -

A, B, C, D, E, H, I, K, M, O, T, U, V

~~1451~~

Worksheet - Y6

Q1. Mark and write the number of line of symmetry =

1.



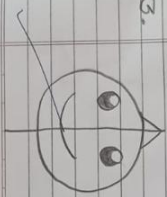
4 line of symmetry

2.




1 line of symmetry


3.



1 line of symmetry

4.  2 lines of symmetry

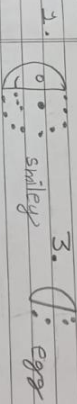
5.  1 line of symmetry

6.  line of symmetry

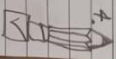
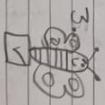
Q2. Complete the figure by drawing other side of the line of symmetry.



Q3. Draw mirror image.



Q4. Tick the symmetrical figure.



Ln-17

Lists and Tables

* Re-Activity Pg no-201 done in T.B

Points to remember

1. Tally marks are numerals used for quick counting. We draw a vertical line for every four counts, and the fifth is a diagonal crossing the first four.

2. A frequency table is a table that lists items and shows their frequency (the number of times they occur)

3. The table and the tally marks help us to organise the data

Abstract stage (Pg-204)

12. Tally marks

A class of 20 pupils took a survey on the no of crafts they made during their art class.

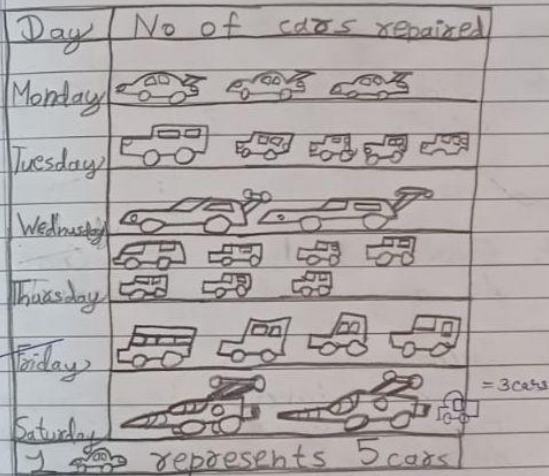
No of crafts	Tally marks	Pictograph
0	1	⊙ ⊙ ⊙ ⊙ ⊙
1		⊙ ⊙ ⊙ ⊙ ⊙
2		⊙ ⊙ ⊙ ⊙ ⊙
3	1	⊙

Abstract stage (Pg-206)

1. Bar graph- For that Ajeel counted the number of flowers

Worksheet-47

3. The pictograph below shows the number of cars Mr. Goel repaired last week. Use it to answer the question that follows.



1. How many cars did Mr. Goel repair on Monday?

Ans = $5 \times 3 = 15$

2. On which day the maximum no of cars were repaired

Ans Thursday

3. Did he repair 30 cars on Thursday?

Ans No

4. On which day Mr. Goel did not do any work?

Ans Sunday

5. How many cars did he repair on Tuesday and Saturday?

Ans. $25 + 15 = 40$ cars

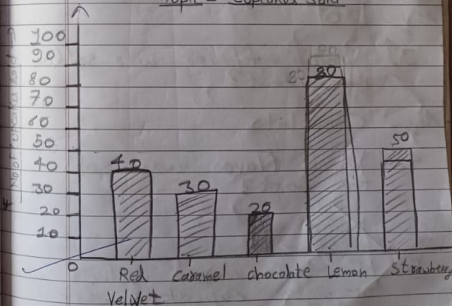
6. How many fewer cars

did he repair on Saturday than Friday

Ans. $20 - 15 = 5$ cars are fewer

2. A cupcake cafe sold different flavours. Use it to answer the questions

Topic - Cupcakes Sold



✓ 1. How many caramel cupcakes were sold?

Key: 30

✓ 2. How many more lemon cupcakes were sold than strawberries?

Key: 30

✓ 3. Which flavor was sold the least?

Key: Chocolate

✓ 4. Which flavor was sold the most?

Key: Lemon

✓ 5. How many red velvet and chocolate cupcakes were sold?

Key: 60

✓ 6. How many more red velvet cupcakes were sold than chocolate cupcakes?

Key: 20

Key: 20