

28/1/25

### 1.13 Time and Calender

a) 1 Hour = 60 Minutes

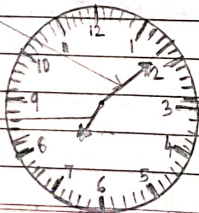
b) There are small Marking between 2 Numbers in Clock that stands for 1 Minute each:

c) We can Divide Clock face into 4 Parts. There are 15 Minutes in each Part: 1 quarter = 15 Minutes

Draw the clock page no. 153

minute hand

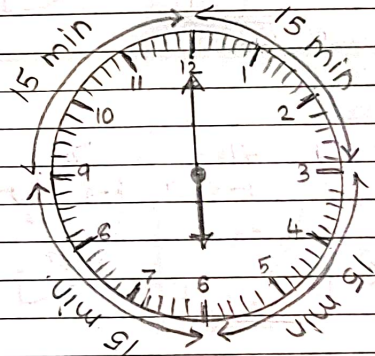
hour hand



7:08

There are 60 small markings around the clock. 1 minute each marking

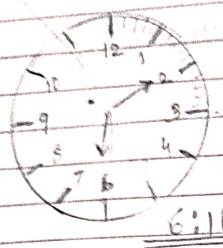
Draw the clock page 154.



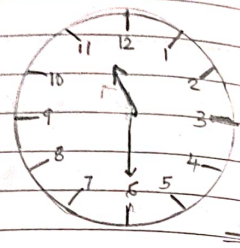
6:00

1 quarter = 15 minutes

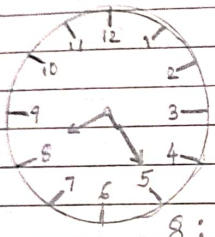
Drawing of clock [show timing]



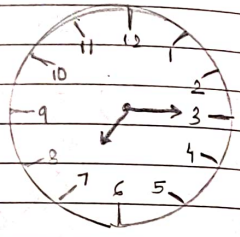
6:10



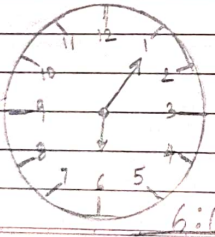
11:30



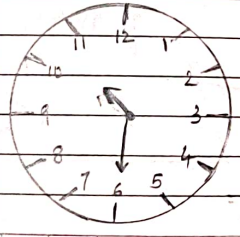
8:25



7:15



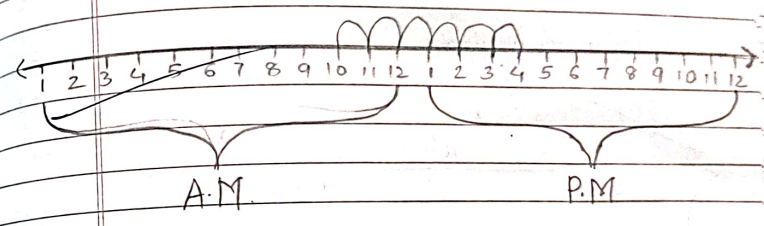
6:05



10:30

T.B. Page no. 152

Let's count the number of hours on a number line



Abstract Stage T.B. page no. 158

- 1) Convert the hours to minutes:  
 a) 2 Hours

$$1 \text{ Hour} = 60 \text{ Minutes}$$

$$2 \text{ Hour} = 2 \times 60 \\ = \underline{120 \text{ minutes}}$$

b) 5 Hours

$$1 \text{ Hour} = 60 \text{ Minutes}$$

$$5 \text{ Hours} = 5 \times 60 \\ = \underline{480 \text{ minutes}}$$

c) 7 Hours

$$1 \text{ Hour} = 60 \text{ Minutes}$$

$$7 \text{ Hours} = 7 \times 60 \\ = \underline{420 \text{ minutes}}$$

d) 3 Hours

$$1 \text{ Hour} = 60 \text{ minutes}$$

$$3 \text{ Hours} = 3 \times 60 \\ = \underline{180 \text{ minutes}}$$

2) Convert in minutes

a) 3 Hours 30 minutes

$$1 \text{ Hour} = 60 \text{ min}$$

$$3 \text{ Hours} = 3 \times 60 \\ = 180 \text{ mins}$$

$$180 + 30 \\ = \underline{210 \text{ minutes}}$$

b) 2 Hours 56 minutes

1 Hour = 60 minutes

2 Hours =  $2 \times 60$   
= 120

120 + 56  
= 176 minutes

c) 5 Hours 10 minutes

1 Hour = 60 minutes

5 Hours =  $5 \times 60$   
= 300

300 + 10  
= 310 minutes

d) 4 Hours 13 minutes

1 Hour = 60 minutes

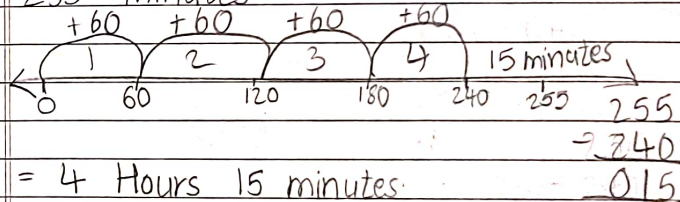
4 Hours =  $4 \times 60$   
= 240 minutes

240 + 13  
= 253 minutes

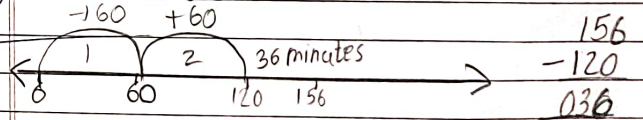
3/2/2020/4

3) Convert the following to Hours and Minutes:-

a) 255 minutes

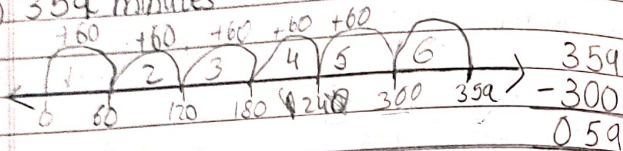


b) 156 minutes



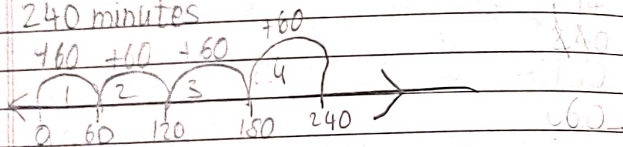
= 2 Hours 36 minutes

c) 359 minutes



~~5 Hour 59 minutes~~

d) 240 minutes



~~4 Hours~~

II Concrete stage TB Page no. 160

a) 8 Hours 51 minutes - 3 Hours 20 minutes

Hrs	min
8	51
<del>-3</del>	<del>20</del>
5	31

∴ 5 Hours 31 minutes

b) 2 Hours 18 minutes + 5 Hours 20 minutes

Hrs	min
<del>2</del>	<del>18</del>
+5	20
7	38

∴ 7 Hours 38 minutes

c) 3 Hours 50 minutes - 1 Hour

Hrs	min	
3	50	∴ <u>2 Hours 50 minutes</u>
- 1	00	
2	50	

d) 10 Hours + 4 Hours 30 minutes

Hrs	min	
10	00	∴ <u>14 Hours 30 minutes</u>
+ 4	30	
14	30	

e) 3 Hours 21 minutes ⇒ 2 Hours 1 minute

Hrs	Min	
3	21	∴ <u>1 Hours 20 minutes</u>
- 2	1	
1	20	

HW

f) ~~8 Hours~~ - 5 Hours

Hrs		
8		∴ <u>3 Hours</u>
- 5		
3		

g) 6 Hours 31 minutes + 5 Hours 20 minutes

Hrs	min	
6	20	∴ <u>11 Hours 51 minutes</u>
+ 5	31	
11	51	

b) 11 Hours 5 min + 2 Hours 28 minutes

Hrs	min	
11	5	∴ <u>13 Hours 33 minutes</u>
+ 2	28	
13	33	

III Abstract Stage T.B. Page no. 160

a) 2 Hours 17 minutes + 5 Hours 30 minutes

Hrs	min	
2	17	∴ <u>7 Hours 47 minutes</u>
+ 5	30	
7	47	

b) 4 Hour 19 minutes + 5 Hour 22 minutes

Hrs	min	
4	19	∴ <u>9 Hours 41 minutes</u>
+ 5	22	
9	41	

c) 3 Hours 35 minutes - 3 Hours 22 minutes

Hrs	min	
3	35	∴ <u>13 minutes</u>
- 3	22	
0	13	

d) 3 Hours 41 minutes + 6 Hours 5 minutes

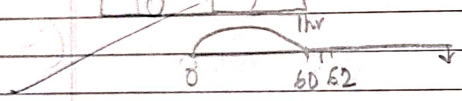
Hrs	min
3	47
+ 6	5
9	46

∴ 9 Hours 46 minutes.

e) 4 Hours 25 minutes + 5 Hours 37 minutes.

Hrs	min
4	25
+ 5	37
- 9	62
+ 1	-2
10	2

60 min = 1 hr.  
62 min - 60 min = 2 min



9 hours 60 min + 2 min  
9 hours 1 hour 2 min  
∴ 10 hour 2 min.

f) 7 Hours 59 min - 2 Hours 25 minutes

Hrs	min
<del>7</del>	<del>59</del>
<del>- 2</del>	<del>25</del>
5	34

IV) Blooming Questions:-

Q. 3) Create a timeline to order these invention.

1) Air Conditioner = 1902

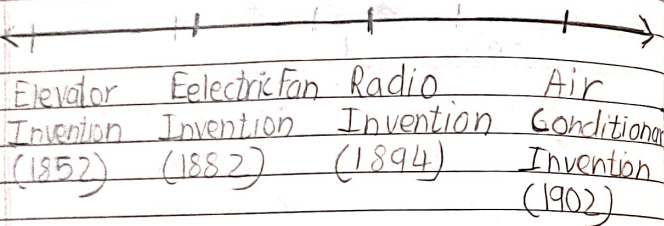
2) Electric Fan = 1882



3) Elevator = 1852

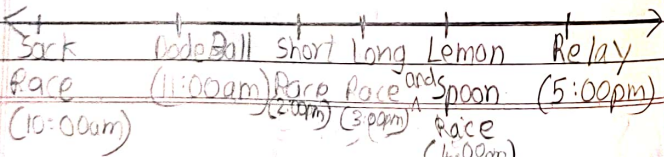
4) Radio = 1894

Timeline



Timeline helps us to record the events in order

Timeline of sports events (164)

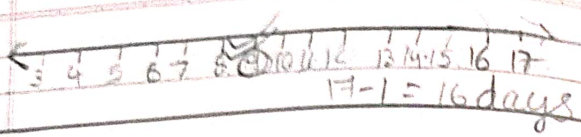


\* Answer the following:-

a) Solution: Year at which Telephone was invented = 1874  
Transistor was invented after 74 years  
So, year at which transistory was invented =  $1874 + 74 = 1948$

b) Solution:- Starting date for sindhus Sports = 3<sup>rd</sup> of May  
No. of day Sports remain Closed = 15 days  
Date at which Class will resumed = Starting count from 3<sup>rd</sup> May, for 15 days:

Date coming = 17<sup>th</sup> May  
But + Sunday in Between 15 day  
 $= 17 - 1 = 16$  days = 16<sup>th</sup> May  
Her class will resume on 16<sup>th</sup> May.



c) Solution:-  
Take off time = 7:30 am  
Reaching before = 90 minutes  
∴ to reach Airport = Hrs min

hrs	min
6	30 + 60 = 90
7	30
-	90
6	00

∴ He should reach at Airport by 6:00 am

d) Solution: Time at which Mahira left for Zoo = 10:00 am Ti

Time at which she arrived = 11:10 am  
Time at which she left from Zoo = 4:30 pm  
(Converting: 4:30 in 24 Hours = 16:30)

Total Duration at Zoo = 16:30  
- 11:10  
5:20

∴ She stays at Zoo for 5 Hours 20 minutes.

★ Post Activity

Solve the following:-

a) Addition:-

i) 2 Hours 25 minutes + 3 Hours 35 minutes

Hrs	Min
	1
2	25
+ 3	35
5	60
+ 1	-60
6	00

1 hr = 60 min

b) Subtraction:-

Hrs	Min
5	3 15
- 3	<del>45</del>
- 3	39
- 2	06
1	06

5 hrs 45 min - 3 hrs 39 min

∴ 2 Hours 6 minutes

7/2/25