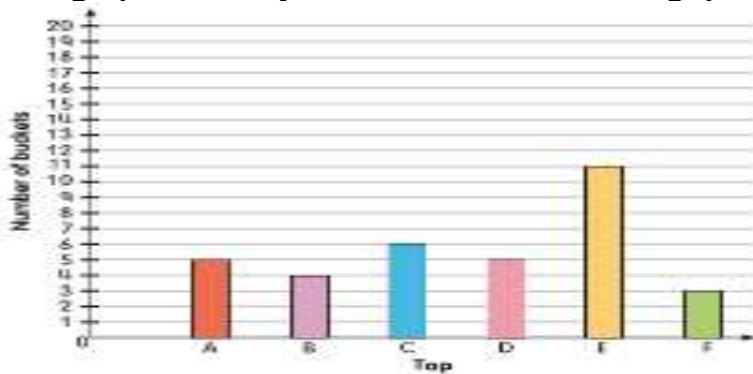




Class :IV
 Prepared by-Rajni Y.

Subject: Maths
 L-14 Graphs and Charts

Q.1 The following graph shows the number of buckets filled in 2 hours through different taps. Read the graph carefully and answer the following questions.



- The least number of buckets were filled from the tap F and the most number of buckets were filled from the tap E.
- If equal time was taken to fill each bucket, how many buckets of water was collected through tap C in 1 hour? 3
How did you work it out? _____
- If 1 full bucket of water is equal to 10 L, how much water is collected through tap B? 4 × 10 = 40 l
- Through which tap water flows the fastest? Why? E
- Arrange the taps in ascending order, according to the amounts of water collected through them.

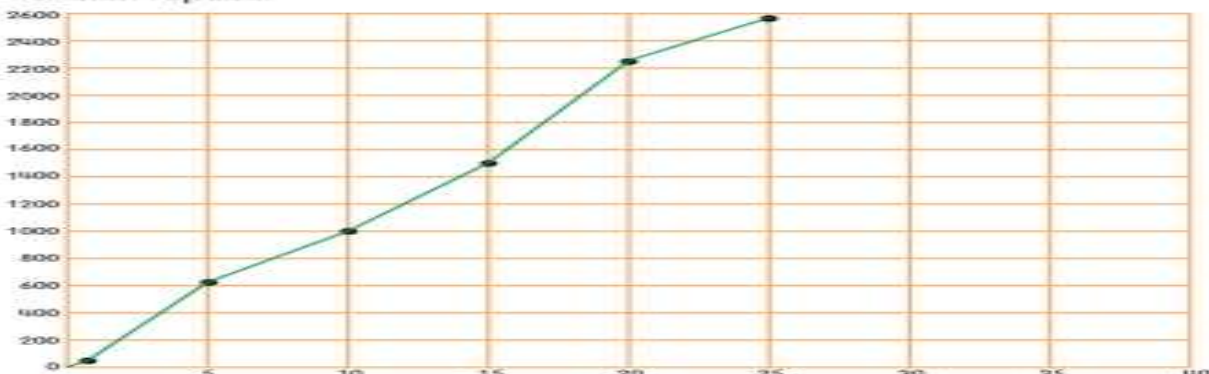
E C A D B F

Q.2 Here is a table that converts Pounds (£) to Indian rupees (INR or ₹). The exchange rate is about 102 Indian rupees. Complete the table.

Here is a table that converts Pounds (£) to Indian rupees (INR or ₹). The exchange rate is about 102 Indian rupees. Complete the table.

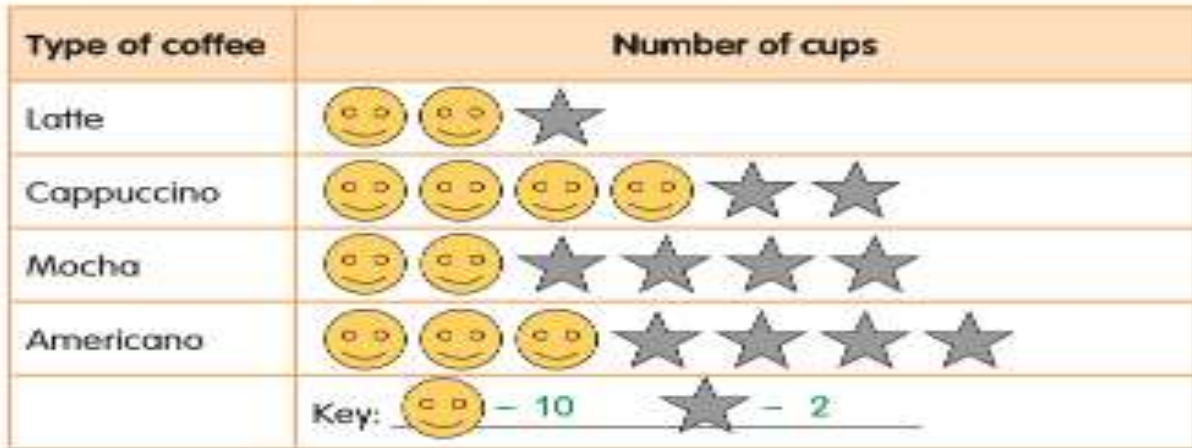
Pound (£)	INR (₹)
1	102
5	510
10	1020
15	1570
20	2040
25	2550

Now draw a line graph representing the conversion from Pounds to Indian rupees.



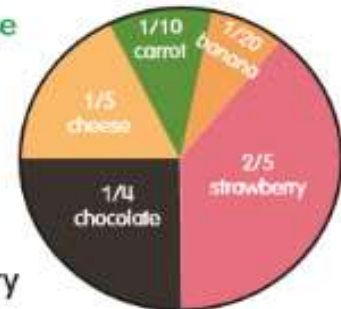
Q.3 Here is the table showing the number of cups of different coffees that were sold at a restaurant on a day. Use the table to create a pictograph and do not forget to mention the key.

Type of coffee	Latte	Cappuccino	Mocha	Americano
Number of cups	22	44	28	38



Q.4 The pie chart represents data about the cakes sold at a bakery. Study the pie chart and answer the questions.

- a What fractions of the sales are strawberry cakes? $\frac{2}{5}$
- b Which cake sold half as much as carrot cakes? Cheese
- c Which cake is one-fifth of the total? Cheese
- d Which cake is the best seller? Strawberry
- e What fraction of the total are strawberry and carrot cakes combined? $\frac{1}{2}$
- f What fraction of the total are cheese cakes, strawberry and chocolates cakes combined? $\frac{17}{20}$



Q.5 The table shows the favourite colours of students in Class 4B.

Colour	Red	Blue	Green	Pink
Number of students	10	15	5	10



Which pie chart correctly shows the information in the table? Explain with reasoning.

Teacher

Hod

Coordinator

Principal

Post activity- Maths Fact

- 1) The numbers ending with 0,2,4,6 or 8 are even numbers.
- 2) The numbers ending with 1,3,5, 7 or 9 are odd numbers.
- 3) The predecessor and the successor of an even no is always an odd number and vice versa.
- 4) Zero is considered as an even number.

Teacher

H.O.D.

Co-Ordinator

Principal

S.Teacher

H.O.D.

Co-Ordinator

Principal