

NAME: _____
CLASS: ___5___ DIV : _____
Prepared By: MS VIDYA. H

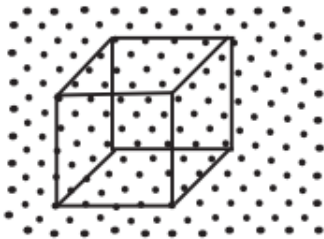
DATE: _____
SUBJECT: MATH
LESSON- L-5 Shapes, Nets &
Symmetry

PRE ACTIVITY – Lets get started page no. 137

Exercise 5A

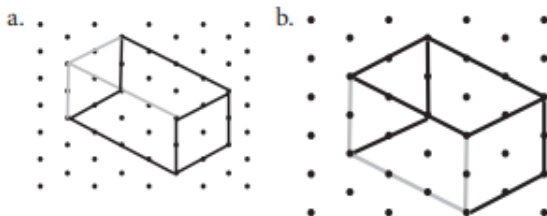
Solution:

1. Draw a cube on the given isometric dot paper.



2. Complete the cuboids.

Solution:



3. Tick (✓) the views of the following solid objects.

Solution:

a. Front view of a car



b. Side view of a truck



c. Top view of a box



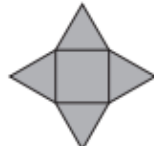
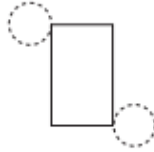
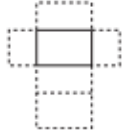
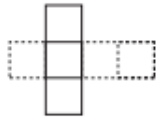
d. Top view of an umbrella



Exercise 5B

1. Match the solid shapes in Row A with the nets in Row B. Colour the nets.

Solution:



2. The layout which can be folded up to make the cube is:



Exercise 5C

1. Fill in the blanks.

Solution:

Rotation Symmetry

How many times does the image look like its original shape in one rotation?



.....
1



.....
2



.....
2



.....
1



2. Draw and find out the number of times the following images would look like their original shape in one rotation. Write the order of symmetry.

Solution:

- a.  2 order of symmetry
 b.  2 order of symmetry
 c.  2 order of symmetry
 d.  1 order of symmetry

3. Complete the following patterns.

Solution:

- a. 
 b. 
 c. 

4. Draw and write the number of lines of symmetry in the following shapes.

Solution:



POST ACTIVITY : Solve the puzzle page no. 145

Teacher

HOD

Co-ordinator

Principal

