



SNBP International & Senior Secondary School, Chikhali, Pune.
Affiliation No. 1130703
Academic session 2024-25
NOTES-13 (TERM-2)

Prepared by: POONAM WAGHELA

LESSON-13 TIME AND CALENDAR

PREACTIVITY: - Lets begin in T.B. page no. 151

Let's Begin

Udit, look! I have marked our school picnic on the calendar with a blue circle. Can you tell me which day would it be?



Yes, Alia. It is the 3rd Saturday in November. We have to leave school at 9:00 am in the morning as the picnic spot is an hour away.



- Look at the given calendar, and answer the following questions.
 - How many Sundays are there in the year 2023? 53
 - What time will Alia and Udit reach the picnic spot? 10:00
- Which month comes before November? OCTOBER
- On which days are the following festivals falling?

Name of the festival	Date	Day
a) Christmas	<u>25th Dec.</u>	<u>Monday</u>
b) Independence Day	<u>15th August</u>	<u>Tuesday</u>
c) Republic Day	<u>26th Jan</u>	<u>Thursday</u>
d) Teachers' Day	<u>5th Sep</u>	<u>Tuesday</u>
e) Children's Day	<u>14th Nov</u>	<u>Tuesday</u>

Also find out the dates and days for Eid, Diwali, Pongal and Holi. Represent the same in a table in your notebook.

TEXTBOOK PAGE NO. 154

Concrete Stage

Use a clock to complete the following table. One has been done for you.

Time	Hour hand	Minute hand
9:20	between <u>9</u> and <u>10</u>	points to <u>4</u>
10:10	between <u>10</u> and <u>11</u>	points to <u>2</u>
4:30	between <u>4</u> and <u>5</u>	points to <u>6</u>
5:15	between <u>5</u> and <u>6</u>	points to <u>3</u>
8:45	between <u>8</u> and <u>9</u>	points to <u>9</u>
2:55	between <u>2</u> and <u>3</u>	points to <u>11</u>

Pictorial Stage

1 Write the time for the following activities. Also, use a.m. or p.m. to write the time.

a attend art class at 8:35 a.m. 

b eat breakfast 7:55 a.m. 

2 Match the following.







a 	b 	c 	d 
			
i. 07:25	ii. 10:32	iii. 02:13	iv. 03:46

Abstract Stage

1 Write the time.

- | | |
|--|---|
| a 5 minutes before 6:10 6:05 | c 25 minutes after 8:35 9:00 |
| b 10 minutes before 10:55 10:45 | d 20 minutes after 7:22 7:42 |

2 Draw hands to represent the time for the following activities. Use a.m. or p.m.

a go for jogging  6:00 am	b have lunch  2:00 pm	c gazing stars  9:00 pm
d go to school  8:00 am	e have dinner  8:00 pm	f wake up  5:45 am

3 Between 9:00 a.m. and 9:10 a.m., circle the numbers on the clock that the minute hand passes. Explain.



TEXTBOOK PAGE NO.157

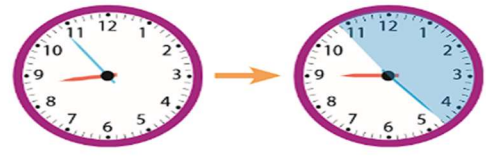
Concrete Stage

Use a clock, and fill in the blanks.

- a The minute hand moves 35 minutes between 6:10 a.m. and 6:45 a.m.
- b The minute hand takes 3 complete rounds of a clock between 7:15 a.m. and 10:15 a.m.

Pictorial Stage

Look at the given clocks, and answer the questions.



- a What is the time on clock A?
- b What is the time on clock B?
- c Find out the number of minutes that have passed as shown in clock B. minutes

Abstract Stage

1 Convert the hours to minutes. Write the same in your notebook.

- a 2 hours b 8 hours
- c 7 hours d 3 hours

2 Convert the following to minutes.

- a 3 hours 30 minutes
 $3 \text{ hrs} \Rightarrow 3 \times 60 = 180$
 $180 + 30 = 210 \text{ minutes}$
- b 2 hours 56 minutes
 $2 \times 60 = 120$
 $120 + 56 = 176 \text{ minutes}$
- c 5 hours 10 minutes
 $5 \times 60 = 300$
 $300 + 10 = 310 \text{ minutes}$
- d 4 hours 13 minutes
 $4 \times 60 = 240$
 $240 + 13 = 253 \text{ minutes}$

3 Convert the following to hours and minutes.

- a 255 minutes b 156 minutes
- c 359 minutes d 240 minutes

Add 2 hours 25 minutes and 3 hours 35 minutes.

	h	min
	<input type="text"/>	<input type="text"/>
	<input type="text"/>	<input type="text"/>
+	<input type="text"/>	<input type="text"/>
	<input type="text"/>	<input type="text"/>

$$2 \text{ h } 25 \text{ min} + 3 \text{ h } 35 \text{ min} = \text{ h min}$$

$$= \text{ h}$$

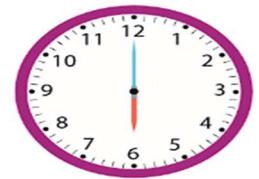
Concrete Stage 

Use 'Number Line' a clock to work out the following.

- | | | |
|---|-------------------------|---------------|
| a | 8 h 51 min – 3 h 20 min | 5 hrs 31 min |
| b | 2 h 18 min + 5 h 20 min | 7 hrs 38 min |
| c | 3 h 50 min – 1 h | 2 hrs 50 min |
| d | 10 h + 4 h 30 min | 14 hrs 30 min |
| e | 3 h 21 min – 2 h 1 min | 1 hrs 20 min |
| f | 8 h – 5 h | 3 hrs |
| g | 6 h 31 min + 5 h 20 min | 11 hrs 51 min |
| h | 11 h 5 min + 2 h 28 min | 13 hrs 33 min |

Pictorial Stage 

Draw clocks showing the correct times in your notebook, and fill in the blanks. The first one has been done for you.



- Sonu wakes up in the morning at 6:00 a.m.
- After 30 minutes, he takes his breakfast. The time for breakfast is 6:30 a.m.
- 2 hours after breakfast he reaches school. The time is 8:30 a.m.
- He stays at school for 6 hours. So, he leaves school at 2:30 p.m.
- He takes a nap and wakes up 2 hours after he left the school. The time is 4:30 p.m.
- He plays for 2 hours after the nap and comes back home at 6:30 p.m.
- He does his homework for 1 hour after coming home till 7:30.
- He takes his dinner after his homework for 30 minutes till 8:00 p.m.
- He watches TV for 1 hour after dinner till 9:00. Then he goes to sleep at 10:00.

Abstract Stage 

Solve the following.

- | | | |
|---|-------------------------|--------------|
| a | 2 h 17 min + 5 h 30 min | 7 hrs 47 min |
| b | 4 h 19 min + 5 h 22 min | 9 hrs 41 min |
| c | 3 h 35 min – 3 h 22 min | 13 min |
| d | 3 h 41 min + 6 h 5 min | 9 hrs 46 min |
| e | 4 h 25 min + 5 h 37 min | 10 hrs 2 min |
| f | 7 h 59 min – 2 h 25 min | 5 hrs 34 min |

Concrete Stage

Use a calendar to answer the following questions.

- a How many days are there in 3 weeks? 21
- b How many days of the week don't start with the letter T or S? 3
- c How many months of the year doesn't have the letter R in it? 4
- d Tick (✓) the correct statement.
 - i. 1 month = about 20 days = 4 weeks
 - ii. 1 month = about 28 days = 4 weeks
 - iii. 1 month = about 30 days = 4 weeks

Pictorial Stage

Look at the calendar, and answer the following questions.

- a 13 days after 12th June
25th June
- b 21 days after 6th January
27th January
- c 18 days before 1st December
13th November
- d 12th July is 3 weeks before 2nd August



Abstract Stage

Read a calendar, and answer the following questions.

- a A picnic is planned from 15th June to 19th June. How long is the picnic?
4 days
- b The school carnival starts on 23rd June and ends on 5th July. How long is the school carnival? 1 weeks 6 days
- c Sam begins preparing for his science exhibition on 12th September. His exhibition will start on 8th December. How many days does he have to prepare for his exhibition? Give your answer in months and days.
Sam has 2 months 25 days to prepare for his exhibition.
- d Alia's summer break starts on 10th of May and ends exactly after 63 days. So, her summer break is 9 weeks long and it will end on 12 July 2023.

Concrete Stage 

Hintometer: Order the events based on the dates and create a timeline.

Read the information given below on space. Create a timeline on 'Wipe & Clean Fun Mat'. Number the events listed below from the earliest to the latest.

- a USSR launched Sputnik 1 in 1957.
- b Neil Armstrong walked on the Moon in 1969.
- c Alexei Leonov performed spacewalk in 1965.
- d Yuri Gagarin was the first man to reach space in 1960.

- a
- d
- c
- b

Pictorial Stage 

How did you celebrate your last birthday? Create a timeline to show all the events of the day (since you woke up till you went to sleep).

Answer: Answer may vary.

Abstract Stage 

Look at the list of sports events, and create a timeline to represent them in order.

Event	Time
Sack race	10:00 a.m.
Short race	02:00 p.m.
Dodgeball	11:00 a.m.

Event	Time
Long race	03:00 p.m.
Relay	05:00 p.m.
Lemon and spoon race	04:00 p.m.

Answer: Answer may vary.

- a Sri Lanka celebrates Independence Day every year on 4th February.
- b Which country celebrates Independence Day 34 days after New year?
Sri Lanka
- c Name the countries that celebrate Independence Day in the same month.
Maldives & USA
- d Malaysia celebrates Independence Day 58 days after the USA celebrates.

Activity Zone

Look at the table showing the sunrise and sunset times on 1st November 2022 in different places. Use it to play a pair game. The pair who will answer the given questions correctly within minimum time wins.

Number	Place	Sunrise	Sunset
1	Delhi	06:33 a.m.	05:36 p.m.
2	Mumbai	06:39 a.m.	06:04 p.m.
3	Bangalore	06:13 a.m.	05:52 p.m.
4	Kolkata	05:41 a.m.	04:51 p.m.
5	Chennai	06:03 a.m.	05:42 p.m.

- a Name the place where the sun sets the earliest. Kolkata
- b Based on the amount of daylight, complete the comparison statements using the symbols (<, >, or =).
 - i. Kolkata < Chennai
 - ii. Delhi < Mumbai
- c Arrange the places in order based on the sunrise time from the earliest to the latest.

Kolkata
Chennai
Bangalore
Delhi
Mumbai
- d Which place had the least daylight? Chennai
- e Which place had the most daylight? Mumbai

Blooming Questions

- 1 Draw the hour hand and the minute hand on the clock, as instructed. The hour hand is between 8 and 9, and the minute hand is pointing to 11. What time is it? 8:55



73

- 2 What time is it at noon when the hour hand and the minute hand are both pointing to the same number? Explain.
- 3 Each day from 9 a.m. to noon, how many times does the minute hand on a clock passes 6? Explain.



Answer: 3 times



4 Match the following.

- a 20 minutes to 6
- b 15 minutes past 6
- c 30 minutes past 11
- d 5 minutes past 10

8 Answer the following.

a The telephone was invented in 1874. The transistor was invented 74 years later. When was the transistor invented?

Answer: 1948

b Sindhu's sports class will remain closed for 15 days starting from 3rd May. When will her class resume?

Answer: 16th May

c Vicky's flight will take off at 7:30 a.m. He needs to arrive at the airport 90 minutes before the take off time. At what time should he reach the airport?

Answer: 6:00 a.m.

d Mahira left for a zoo at 10:00 a.m. She arrived at 11:10 a.m. and left at 4:30 p.m. How long was Mahira at the zoo?

Answer: 5 h 20 min

e Sanya went hiking on 15th March. She went ice skating 5 weeks and 3 days later. When did she go ice skating?

5 Read the events listed below, and mark them on the calendar.

a Diya's birthday is on the second Monday of October. Cross-out (✗) the date.

b Gandhi Jayanti is celebrated on 2nd october.

c Diya's father is returning home on 23rd October from an official visit. Circle the date.

d Mark the second and the fourth Saturday with triangles.



6 Create a timeline to order these inventions.

Air-conditioner-1902, Electric fan-1882, Elevator-1852, Radio-1894

7 Match the following.

- | | | |
|----------------------------|--|----------------------------|
| a 5 weeks in days | | i. about 270 days |
| b 9 months in days | | ii. about 35 days |
| c 15 days in weeks | | iii. about 28 weeks |
| d 7 months in weeks | | iv. about 2 weeks |

8 Answer the following.

- a** The telephone was invented in 1874. The transistor was invented 74 years later. When was the transistor invented?

Solution :-Year at which telephone was invented = 1874

Transistor was invented after = 74

$$\begin{aligned}\text{So, years at which Transistor was invented} &= 1874 + 74 \\ &= 1948\end{aligned}$$

Hence ,transistor was invented in year 1948

- b** Sindhu's sports class will remain closed for 15 days starting from 3rd May. When will her class resume?

Solution :- Starting date for sindhu sports = 3rd of May

No.of days sports remain closed = 15 days

Date at which class will be resumed = start counting from 3rd May for 15 days

The date is coming = 17th May, But 1 Sunday in between 15 days

$$\text{So, } 17 - 1 = 16^{\text{th}} \text{ May}$$

Hence she will resume her class by 16th of May

- d** Mahira left for a zoo at 10:00 a.m. She arrived at 11:10 a.m. and left at 4:30 p.m. How long was Mahira at the zoo?

Solution ; -Time at which Mahira left for zoo = 10:00 am

Time at which she arrived = 11: 10 am

Time at which she left from zoo = 4:30 pm

Converting 4: 30 in 24 hrs time = 16:30

$$\begin{aligned}\text{Total duration she stays at zoo} &= 16: 30 - 11: 10 \\ &= 5:20\end{aligned}$$

Hence , she stays at zoo for 5 hours and 20 mins

- e** Sanya went hiking on 15th March. She went ice skating 5 weeks and 3 days later. When did she go ice skating?

Answer: 22nd May

Post Activity :- Solve the following

- a) Add 2 hours 25 minutes and 3 hours 35 minutes
- b) Subtract 5 hours and 45 mins from 3 hours 39 mins

Subject Teacher

HOD

COORDINATOR

PRINCIPAL